



Technical Data Sheet

Beta Hz



Beta Hz is a digital panel meter which has been specially designed for frequency measurement in industrial applications.

Special Features

- Display range : 0...+1999
- Simple configuration
- Available with 24V DC and 110 VAC
- (50 / 60Hz) Supply Voltage

Application

Beta Hz the digital panel meter has been designed for frequency measurement in industrial applications. Frequency measurement ranges available are 12...199.9 Hz and 12...500 Hz.

Technical Specifications

Display	
Type	7 segment LED
Colour	Red
Character Height	14 mm
Display Range	max. 1999
Decimal Point	Selectable by jumpers at rear side
Overflow Display	"1" , if display > 1999

Input	
Input voltage	80...700V
Measuring range	12...199.9 Hz 12...500 Hz

Calibration	
Instruments are calibrated in the factory. Range adjustment span	Fine adjustment is possible

Error Limits	
Intrinsic Error	$\pm (0.25\% \text{ of max. display} + 5 \text{ digits})$

Additional Error	
Temperature Coefficient	$< 190 \text{ ppm} / ^\circ\text{C}$
Zero Point Drift	$< 0.2 \text{ digits} / ^\circ\text{C}$

Ambient conditions	
Operating temperature	0 ° to 50 °C.
Storage temperature	- 20 to 70 °C.
Relative Humidity	0...95% non condensing

Sundry	
Connections	Plug-in

Power supply 3 ranges for power supply are available.		
Direct voltage DC	24 V DC (21...30V)	5.5W approx. (isolated).
Alternating voltage AC	110 V AC (+ 10% / -15%)	5.5W approx. (isolated).
	230 V AC (+ 10% / -15%)	5.5W approx. (isolated).
Universal	1) 45 - 450 V AC/DC ($\pm 5\%$)	
	2) 45 - 300 V AC/DC ($\pm 5\%$)	
Frequency	47 - 60 Hz.	

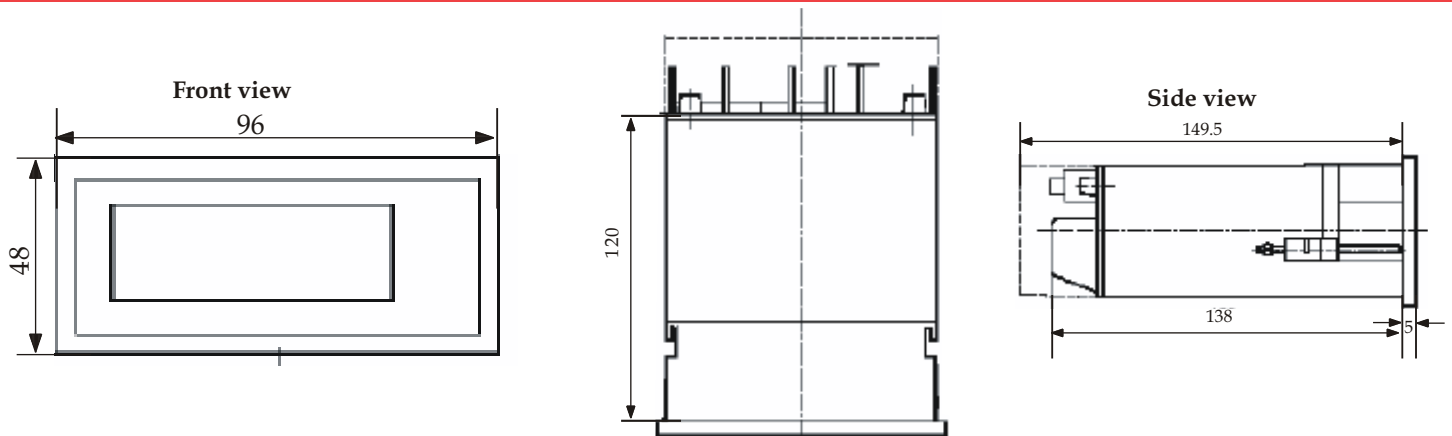
Environment Conditions	
Climatic class	Class 2 acc. to VDE / DIN 3540
Safety class	II acc. to IEC 348 / VDE 0411
Protection class	IP 20 acc. to IEC EN 60 529
front	IP 50
Overvoltage category	II
Device safety	According to IEC EN 61 010
EMC immunity	According to DIN EN 61 000-4-1 to 4
EMC radiated interference	According to IEC EN 61326 class B

Test voltages (Test duration 2 Sec.)		
UH (Aux. voltage)	230 / 110V AC	24V DC
Supply - input signal	2 kV	0.5 kV
Supply - housing	2 kV	0.5 kV
Input signal - housing	2 kV	2 kV

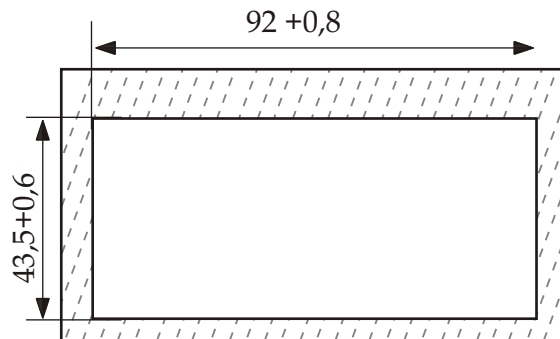
A-D Conversion	
Conversion Method	Dual slope
Integration Time	Approx. 100 ms
Measurements per Second	Typically 3 per sec.

Dimensions and Weights	
Bezel size	96 mm x 48 mm
Panel cut-out	92 F 0.8 mm x 43.5 + 0.6 mm
Overall depth	138 mm.
Weight	500 gm. Approx.

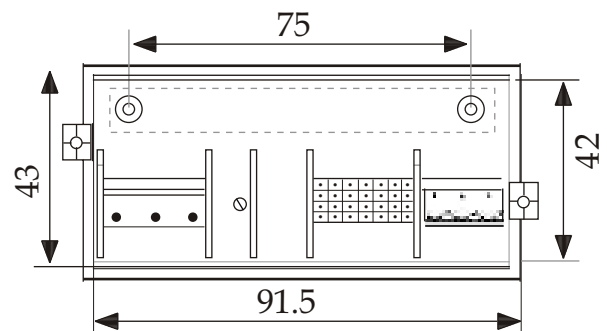
Design DPM



Installation Cut-out



Connections



Ordering Information

Product Code	BT15-	X	X	XX	X	X	0000000
Size	48X96	E					
	96X96	G					
	72X144	H					
Input Type	Frequency Meter	F					
Input Range	12-199.9Hz					01	
	12-500Hz					02	
	20-500Hz					03	
	20-199.9Hz					06	
Power Supply	110A					2	
	120A					4	
	230A					6	
	240A					7	
	24D					9	
	110D					B	
	220D					E	
IP Protection	W/O IP Protection						0
	With IP Protection						1



Sifam Tinsley Instrumentation Inc.
3105, Creekside Village Drive,
Suite No. 801, Kennesaw,
Georgia 30144 (USA)
E-mail Id : psk@sifamtinsley.com
Web : www.sifamtinsley.com
Contact No. : +1 404 736 4903

Sifam Tinsley Instrumentation Ltd.
Central Buildings, Woodland Close,
Old Woods Trading Estate,
Torquay, Devon, England, TQ27BB
Web: www.sifamtinsley.com/uk
Contact No. : +44 (0) 1803 615139